


NH Broadband Mapping & Planning Program:


Cable Service Availability


Broadband Availability


 Cable service available

Other Features

 Interstate

 County boundary

 Lakes and ponds

 Conservation land

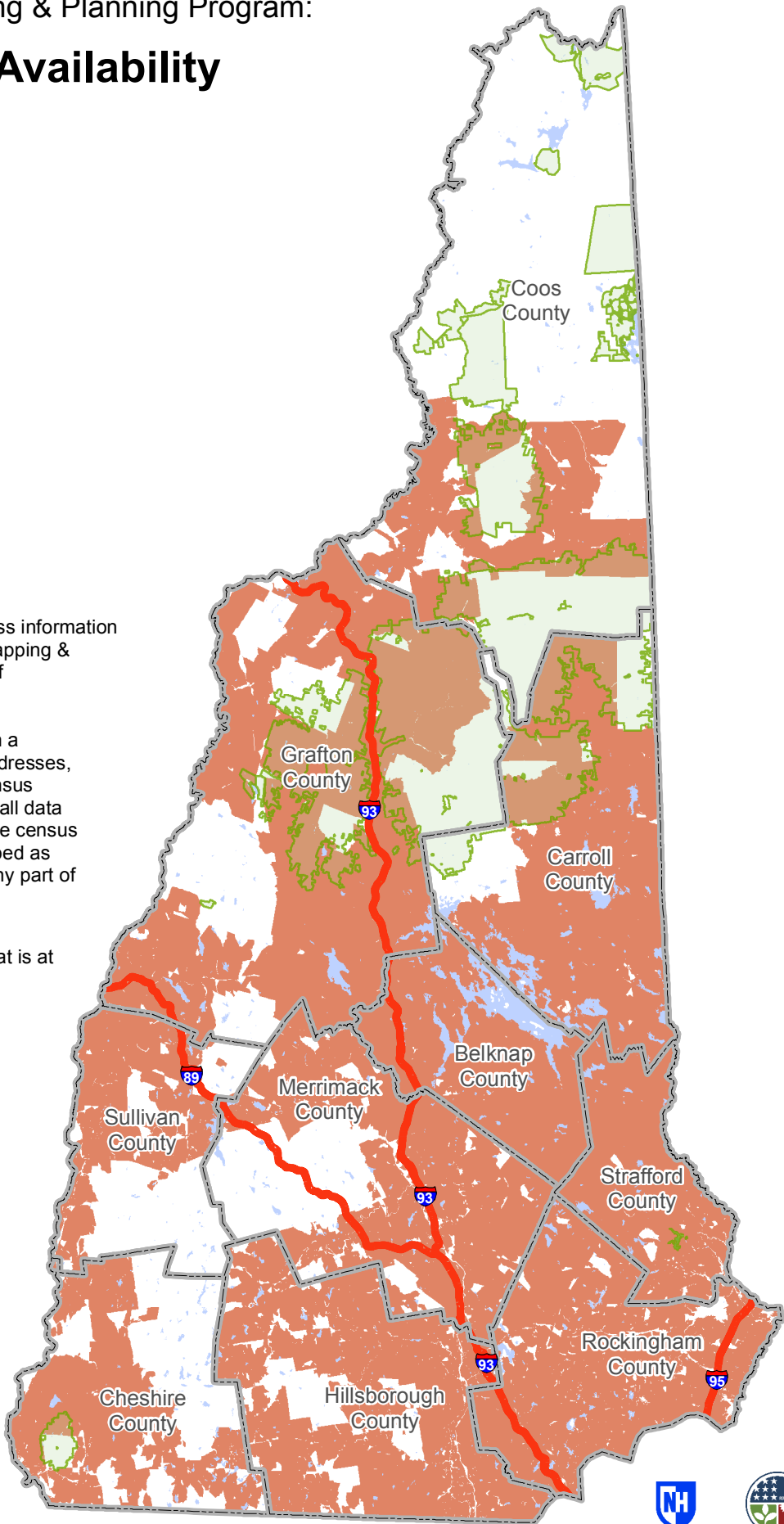
| Service Availability | |
|----------------------|------------|
| Population | Households |
| 1,231,710 | 567,707 |
| 94% | 92% |

** Percentages are based on 2010 US Census NH state totals*

The map displays broadband access information submitted to the NH Broadband Mapping & Planning Program (NHBMPP) as of September 30, 2014.

Service providers submitted data in a range of geographies, including addresses, road segments, census blocks, census tracts, etc. For mapping purposes, all data are aggregated and displayed at the census block level. A census block is mapped as "served" if service is delivered to any part of the block.

Broadband is defined as access that is at least **768 kbps downstream** and **200 kbps upstream**.



Please visit the NHBMPP web site at: iwantbroadbandnh.org

