






NH Broadband Mapping & Planning Program:

Maximum Advertised Download Speed Greater Than or Equal to 50 mbps

Broadband Availability

 Maximum Advertised Download Speed Greater Than or Equal to 50 mbps

Other Features

-  Interstate
-  County boundary
-  Lakes and ponds
-  Conservation land

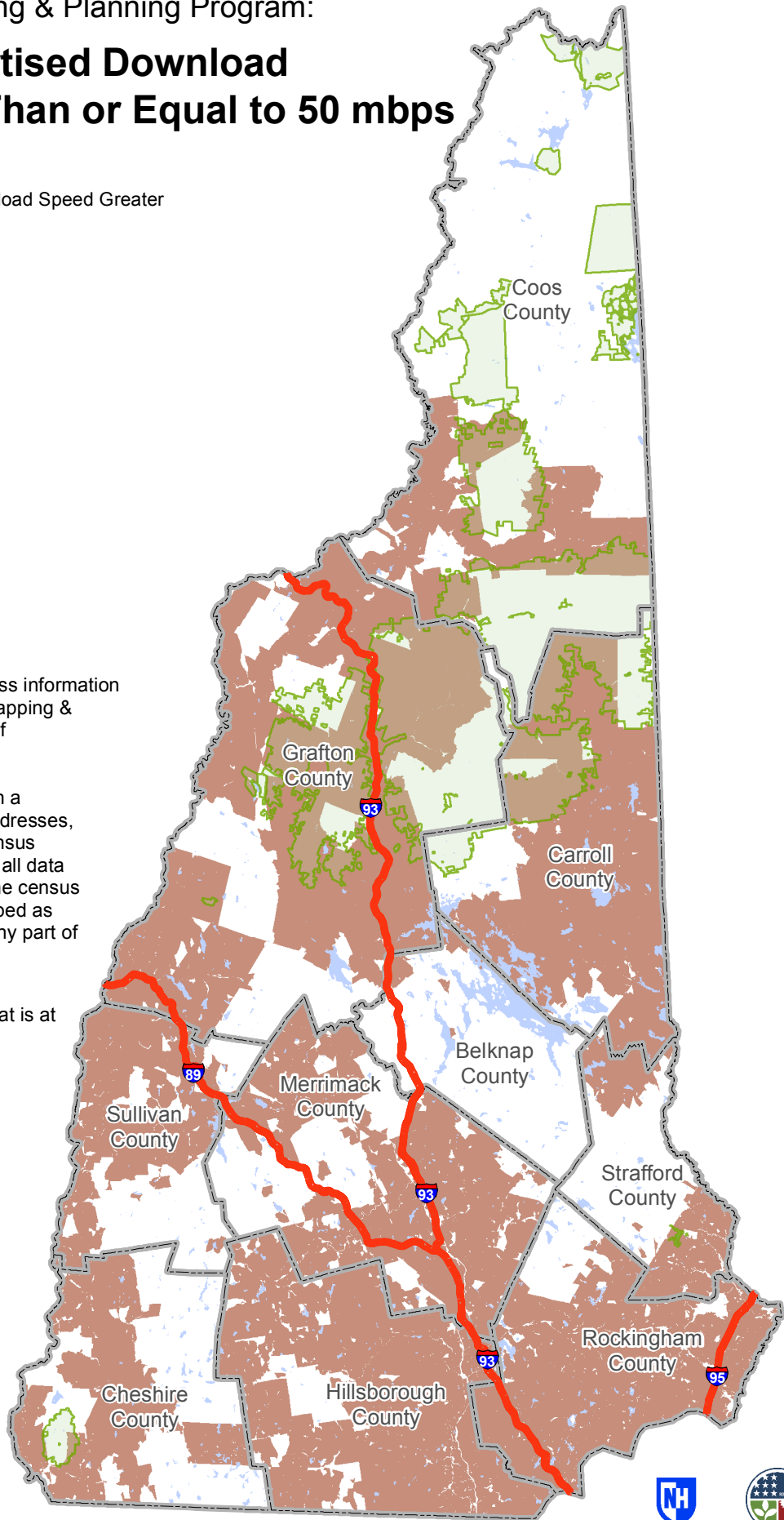
Service Availability	
Population	Households
1,093,120	491,749
83%	80%

* Percentages are based on 2010 US Census NH state totals

The map displays broadband access information submitted to the NH Broadband Mapping & Planning Program (NHBMPP) as of September 30, 2014.

Service providers submitted data in a range of geographies, including addresses, road segments, census blocks, census tracts, etc. For mapping purposes, all data are aggregated and displayed at the census block level. A census block is mapped as "served" if service is delivered to any part of the block.

Broadband is defined as access that is at least **768 kbps downstream** and **200 kbps upstream**.



Please visit the NHBMPP web site at: www.wantbroadbandnh.org

