


# NH Broadband Mapping & Planning Program:

## Wireline versus Terrestrial Wireless Service Availability

### Broadband Availability

 Wireline Service Available

 Wireless Service Available

### Other Features

 Interstate

 County boundary

 Lakes and ponds

 Conservation land

Wireline Service	
Population	Households
1,290,970	600,116
98%	98%

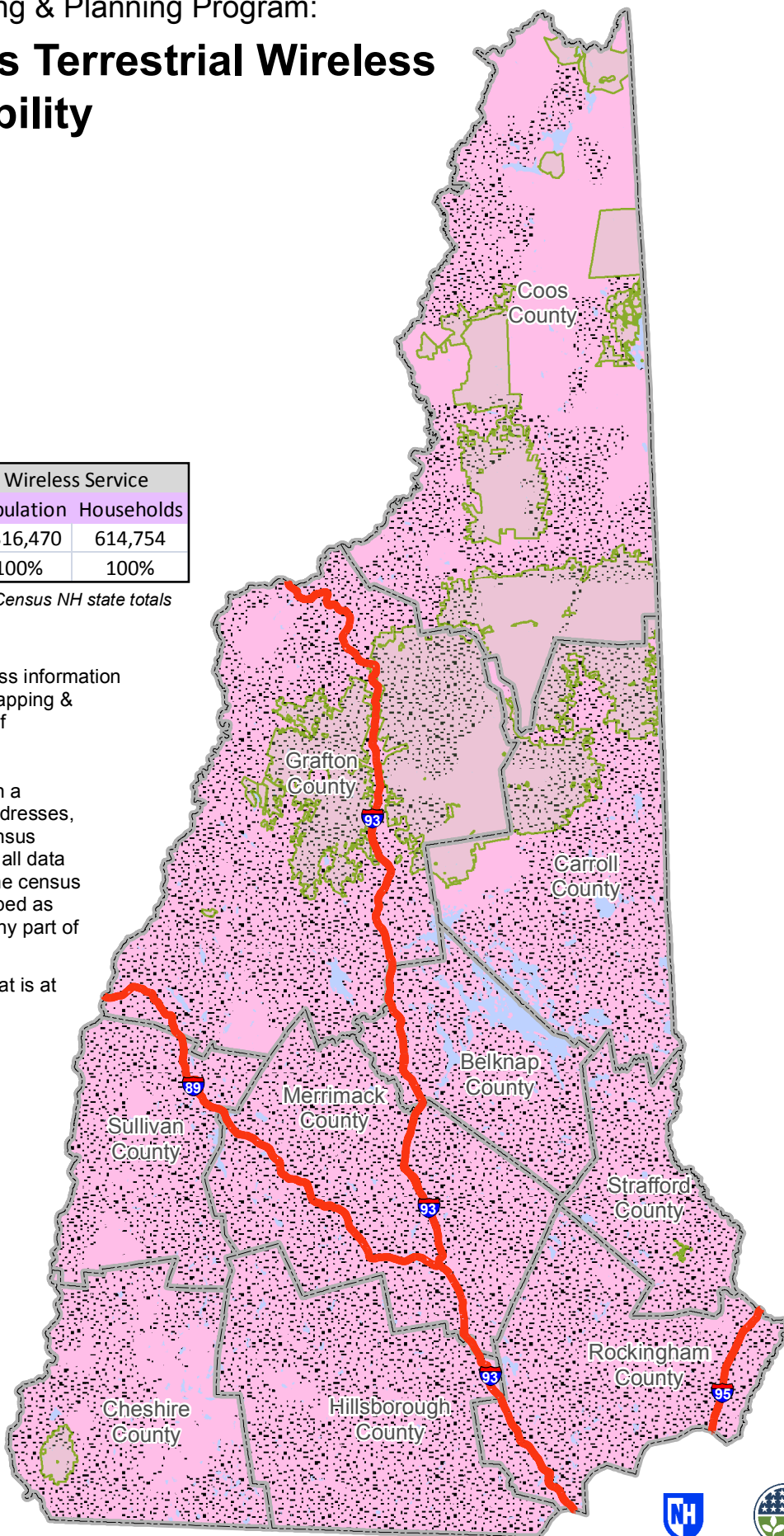
Wireless Service	
Population	Households
1,316,470	614,754
100%	100%

\* Percentages are based on 2010 US Census NH state totals

The map displays broadband access information submitted to the NH Broadband Mapping & Planning Program (NHBMPP) as of September 30, 2014.

Service providers submitted data in a range of geographies, including addresses, road segments, census blocks, census tracts, etc. For mapping purposes, all data are aggregated and displayed at the census block level. A census block is mapped as "served" if service is delivered to any part of the block.

Broadband is defined as access that is at least **768 kbps downstream** and **200 kbps upstream**.



Please visit the NHBMPP web site at: [iwantbroadbandnh.org](http://iwantbroadbandnh.org)

