







# NH Broadband Mapping & Planning Program: Business Broadband Availability (via wire and satellite technologies)

## Service Availability

-  Served (25+ Mbps down x 3+ Mbps up)  
Population: 505,554 (38.4%)  
Households: 227,639 (37.0%)
-  Other Internet Access (6-25 Mbps down x 1.5-3 Mbps up)  
Population: 810,916 (61.6%)  
Households: 387,115 (63.0%)
-  No Internet Access  
Population: 0 (0.0%)  
Households: 0 (0.0%)

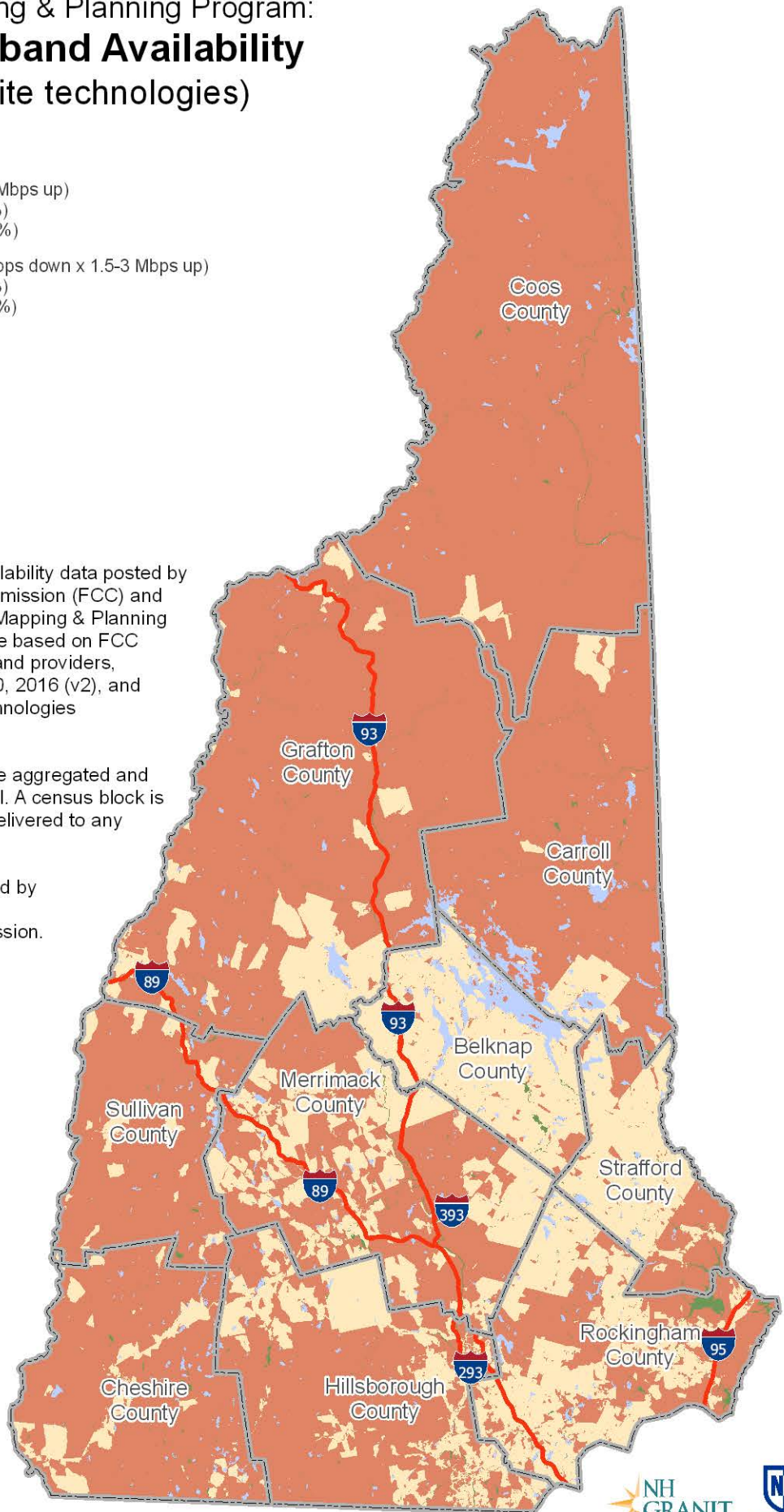
## Other Features

-  County boundary
-  Interstate
-  Lakes and ponds

This map displays broadband availability data posted by the Federal Communications Commission (FCC) and processed by the NH Broadband Mapping & Planning Program (NHBMPP). The data are based on FCC Form 477 submissions by broadband providers, represent availability as of June 30, 2016 (v2), and describe availability across all technologies (including satellite).

For mapping purposes, all data are aggregated and displayed at the census block level. A census block is mapped as "served" if service is delivered to any part of the block.

The NHBMPP is partially supported by grant #NBRC16GNH11 from the Northern Border Regional Commission.



Please visit the NHBMPP web site at:  
[iwantbroadbandnh.org](http://iwantbroadbandnh.org)